

KABA MAS X08 and X09

Mechanical Lock Template

MAG557320

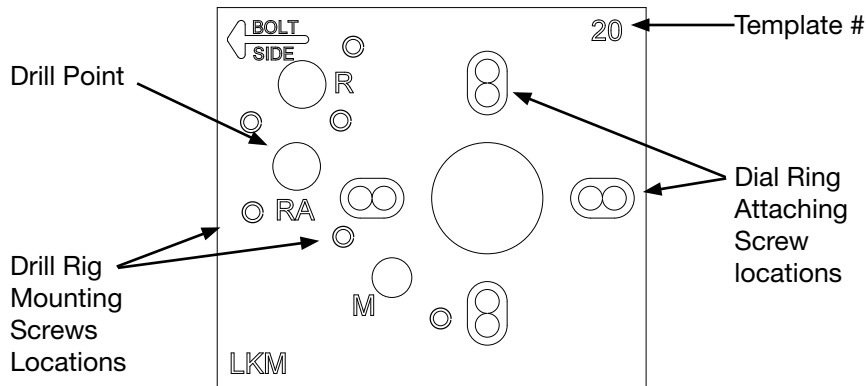
This template is designed for use on the X08 and X09 safe locks. The Labels (stamped letters on the template) are defined as follows:

- M - Motor Gear
- RA - Bolt Rack
- R - Relock

The template is illustrated with the drill points positioned for a right hand mounted lock. Depending on the lock mounting in the safe, the template can be rotated and mounted for any lock hand.

To mount the template, remove the dial and dial ring from the safe. Use the 8-32 screws supplied in the drill rig to secure the template using the holes spaced for the Mosler or S&G/Kaba Mas dial ring screws, orienting the template in the proper handing position. Two sets of dial ring screw locations are provided for this template.

To mount the **Bullet II** or the **High Velocity** drill rig base to the template, chose the appropriate drill point mapped out on the template and attach the drill rig's base to the 8/32 screws provided.



MAG557320INST

Copyright © 2010 Lockmasters Inc. 9/10

Fax 859-885-1731
800-654-0637

LOCKMASTERS[®]
INCORPORATED

salesinfo@lockmasters.com
www.lockmasters.com

2101 John C. Watts Dr., Nicholasville, KY 40356

KABA MAS X08 and X09

Mechanical Lock Template

MAG557320

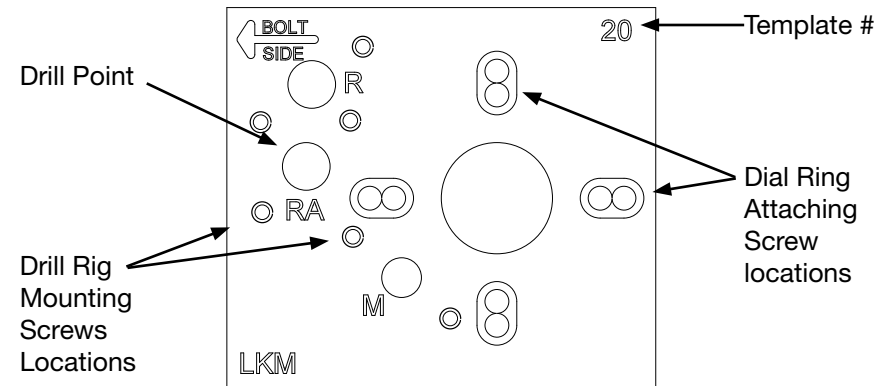
This template is designed for use on the X08 and X09 safe locks. The Labels (stamped letters on the template) are defined as follows:

- M - Motor Gear
- RA - Bolt Rack
- R - Relock

The template is illustrated with the drill points positioned for a right hand mounted lock. Depending on the lock mounting in the safe, the template can be rotated and mounted for any lock hand.

To mount the template, remove the dial and dial ring from the safe. Use the 8-32 screws supplied in the drill rig to secure the template using the holes spaced for the Mosler or S&G/Kaba Mas dial ring screws, orienting the template in the proper handing position. Two sets of dial ring screw locations are provided for this template.

To mount the **Bullet II** or the **High Velocity** drill rig base to the template, chose the appropriate drill point mapped out on the template and attach the drill rig's base to the 8/32 screws provided.



MAG557320INST

Copyright © 2010 Lockmasters Inc. 9/10

Fax 859-885-1731
800-654-0637

LOCKMASTERS[®]
INCORPORATED

salesinfo@lockmasters.com
www.lockmasters.com

2101 John C. Watts Dr., Nicholasville, KY 40356